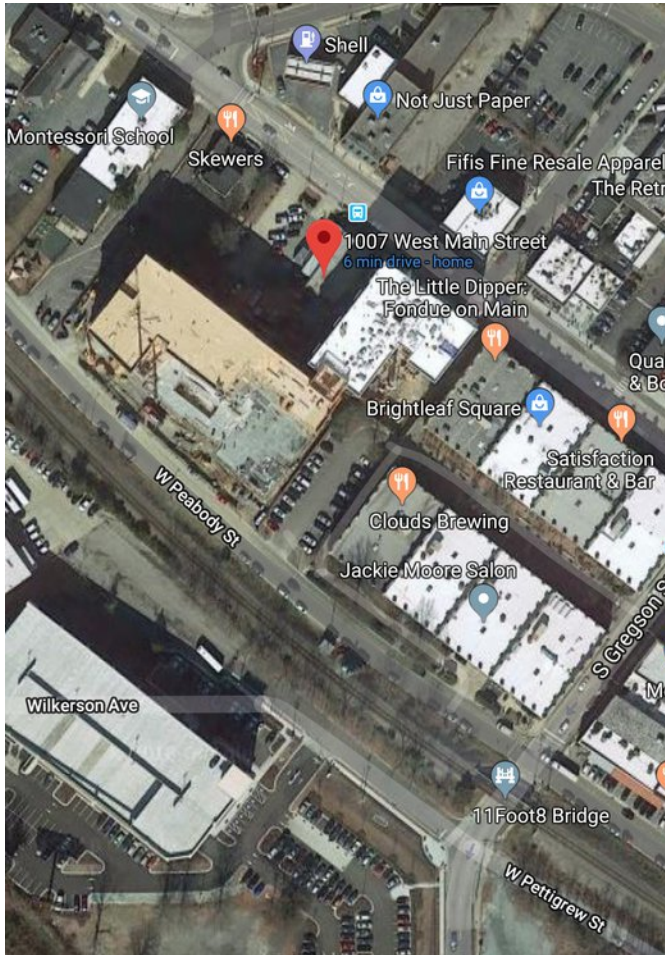




# 3 Spaces Available for Food and Entertainment uses near Brightleaf in Downtown Durham

## 1007, 1009, 1011 W Main St, Durham



**3 Buildings for Lease**  
 Looking to create a vibrant mix of tenants between Duke and Downtown, Next to the Social

- o Building 1 – 751 sf      \$2000/mo
- o Building 2 – 693 sf      \$1900/mo
- o Building 3 – 1268 sf      \$2000/mo
- o Parking on site



Building 1 – 1011 W Main



Building 2 – 1009 W Main



Building 3 – 1007 W Main

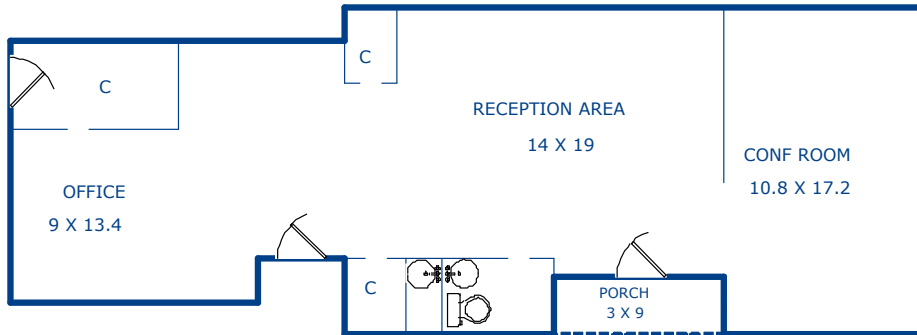
**Contact:**  
**Ian Nidel**  
 919.682.0501x6 office  
 919.349.9021 cell  
[inidel@maverickpartners.com](mailto:inidel@maverickpartners.com)

**McCann Sheridan**  
 919.682.0501x7 office  
 704.796.6102 cell  
[msheridan@maverickpartners.com](mailto:msheridan@maverickpartners.com)

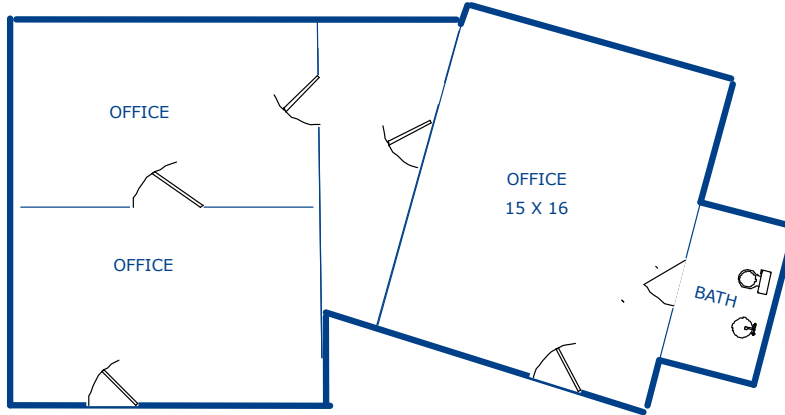
349 W Main St, 2nd Floor  
 Durham NC 27701  
[www.maverickpartners.com](http://www.maverickpartners.com)

# Floor Plans

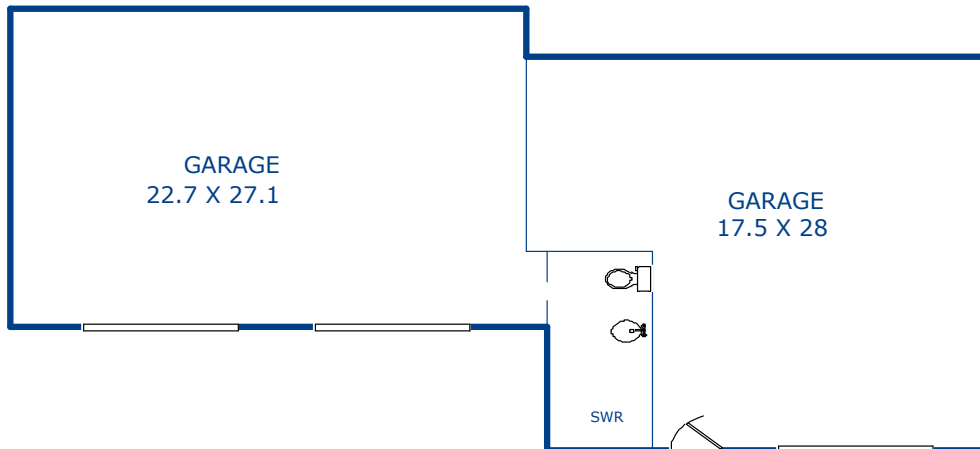
## Building 1 – 1011 W Main St 751sf



## Building 2 – 1009 W Main St 693sf



## Building 3 – 1007 W Main St 1269sf



**Contact:**

**Ian Nidel**

919.682.0501x6 office

919.349.9021 cell

[inidel@maverickpartners.com](mailto:inidel@maverickpartners.com)

**McCann Sheridan**

919.682.0501x7 office

704.796.6102 cell

[msheridan@maverickpartners.com](mailto:msheridan@maverickpartners.com)

349 W Main St, 2nd Floor  
Durham NC 27701  
[www.maverickpartners.com](http://www.maverickpartners.com)  
(919) 682-0501